

CHARGING & SAFETY

- Use only high quality 18650 batteries. Check Mooch for detailed / real battery specifications.
- Use a quality external charger. Do not leave batteries charging unattended.
- Always store 18650 batteries safely in plastic or silicone protective sleeves.
- Do not leave device charging unattended.
- Always check coils for recommended wattage range.

QUICK SETUP

- Attach the Zlide Tank (1.2ohm Coils)
- Fill the tank and wait 5 mins to prime.
- Adjust tank airflow to preference.
- Power on Device (3x)
- Select Wattage Mode.
- Set Wattage to 10W.
- Vape then increase wattage to preferred heat and taste.

Buy
KROMA-R ZLIDE

Innokin Replacement Tanks

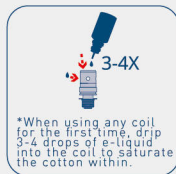
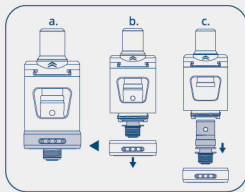
Innokin Replacement Coils



USER MANUAL [EN]

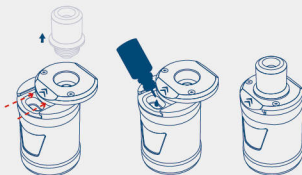
FIRST TIME USE

- 1 REMOVE THE PRE-INSTALLED COIL
- 2 PRIME THE COIL*
- 3 MOUNT THE COIL (Reverse direction of step 1.)
- 4 FILL THE TANK (Remove the mouthpiece, push the direction of the arrow and slide to open the top cap.)
- 5 ADJUST THE AIR FLOW (Adjust the airflow to a comfortable draw and enjoy your vape!)



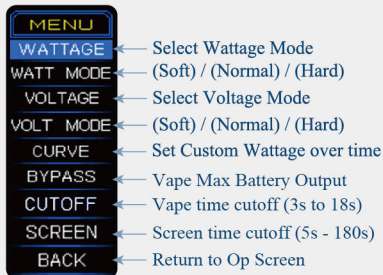
IMPORTANT

- Keep contact clean of debris/eliquid.
- Keep tank at least 1/3 full for best longevity and flavors.
- Do not vape if tank is empty.
- If there is a burnt taste, replace coil.
- Replace coil when there is a reduction in flavour or vapor.

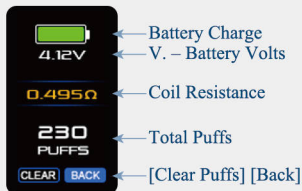


- 6 POWER ON THE KROMA-R.
CLICK [POWER] 3x.

- 7 HOLD  Access Menu



- 8 HOLD  Secondary Screen



- 9 HOLD  Wattage Lock /
Unlock

