

INNOKIN®

COOLFIRE Z50

ZLIDE

Platform
series

QUICK START GUIDE

BUY

Innokin CoolFire Z50 Zlide Kit

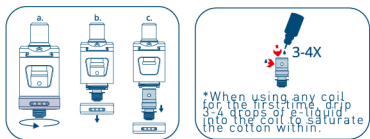
Innokin Replacement Coils

Innokin Replacement Tanks

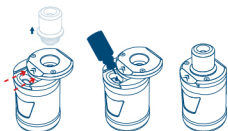


FIRST TIME USE

- 1 REMOVE THE PRE-INSTALLED COIL
- 2 PRIME THE COIL*
- 3 MOUNT THE COIL (Reverse direction of step 1.)



- 4 FILL THE TANK (For the Child-proof slide tank, you have to remove the mouthpiece first, push the direction of the arrow and slide to open the top cap.)



- 5 ADJUST THE AIR FLOW (Adjust the airflow to a comfortable draw and enjoy your vape!)



- 6 3X CLICKS TO TURN ON

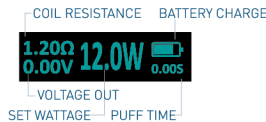


- 7 SELECT MODE

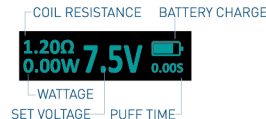
HOLD WATTAGE MODE

HOLD VOLTAGE MODE

WATTAGE



VOLTAGE



- 8 ADJUST SETTINGS AS DESIRED.

PUSH THEN HOLD [UP/DOWN BUTTONS] TO ADJUST WATTAGE OR VOLTAGE. CHECK COIL OR COIL PACKAGING FOR RECOMMENDED WATTAGE RANGE.

- 9 ENJOY AND VAPE ON!

QUICK REFERENCE GUIDE

SETTINGS AND MODES

HOLD ADJUST WATTAGE/VOLTAGE UP

HOLD ADJUST WATTAGE/VOLTAGE DOWN

PRESS SECONDARY SCREEN:

COIL RESISTANCE

1.2000 0

VOLTAGE OUT

PUFF COUNT

HOLD

FLIP DISPLAY ORIENTATION

IMPORTANT:

- YOU MUST BE LEGAL SMOKING AGE TO VAPE. IF YOU DON'T SMOKE, DON'T VAPE!
- DO NOT LEAVE Z50 CHARGING UNATTENDED.
- USE A CERTIFIED WALL CHARGER AND INCLUDED CABLE FOR CHARGING.
- POWER OFF WHEN STORING OR PLACING IN POCKET, BAG OR PURSE.
- REMEMBER TO PRIME COIL. CHECK COIL FOR RECOMMENDED WATTAGE RANGE. START LOWER AND INCREASE TO TASTE.
- HIGHER WATTAGE IS HOTTER. IF A COIL TASTES BURNED, REPLACE IMMEDIATELY AND DISPOSE OF USED COIL SAFELY.
- ADJUST AIRFLOW FOR PREFERRED DRAW. CHANGE COILS REGULARLY FOR OPTIMAL FLAVOR AND VAPOUR.
- IF YOU HAVE ANY QUESTIONS, OR TO INQUIRE ABOUT THE 3 MONTH LIMITED WARRANTY, PLEASE EMAIL support@innokin.com